



SIDEWINDER® G₂ FIREWALL™

Providing enterprise strong™ protection for the world's most important networks

Strong price/performance across the entire line of Sidewinder G₂ Firewalls

Preinstalled and pretuned for ease of installation, the Sidewinder G₂™ family of firewall/VPN appliances provides an out-of-the-box security solution that drops seamlessly into any IP network. No special training or teams of IT experts are required. The Sidewinder G₂ appliances deliver a complete solution that combines Secure Computing®'s uncompromised firewall software with a family of high-performance, rack-mounted server platforms. The appliance platforms range from the lowest-cost model 25 in a 1U form factor all the way up to the powerful model 4000 unlimited-class appliance that ships with four of the latest Intel® processors, the fastest bus speeds, and multiple gigabit interfaces.

The Sidewinder G₂ models 25, 100, 250, 1000, 2000, and 4000 all fit cleanly into a standard 19 inch rack requiring as little as 1.7 inches of height (1U models). No dedicated terminals, keyboards, or special power supplies are required.

Network-friendly, Sidewinder G₂ arrives "Tivoli Ready" and includes built-in support for all major network "housekeeping" protocols (SNMP, OSPF, RIP, NTP, ICMP, PING, etc.). Administrators can easily monitor the Sidewinder G₂'s health with its built-in monitoring tools and reports, or may export the audit data to leading third-party reporting products like WebTrends.

With its simple Power-It-On!™ deployment features, its remote backup/restore capabilities, centralized logging, complete health/audit monitoring and pioneering Strikeback® intrusion detection and automated response features, Sidewinder G₂ is the perfect choice for any security-minded organization, especially where remote unattended "lights out" installations are required.

Easy to install, easy to own, and always secure

It takes just a few minutes to decide how you want your Sidewinder G₂ to work. The G₂ Firewall™'s Windows-based configuration wizard asks you a few basic questions about your network and security policy and then stores the answers on a standard diskette.

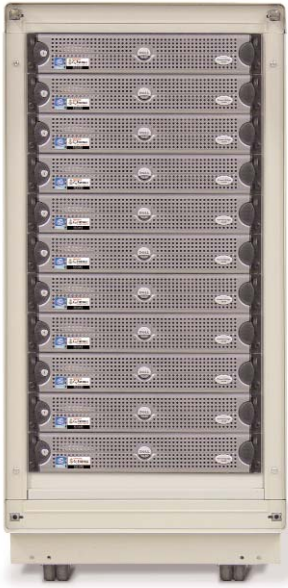
Then, simply slip your preinstalled Sidewinder® G₂ Firewall™ appliance into a rack slot, connect the network cables, and insert the wizard-based start-up diskette. With that done, you are all set up for the great Power-It-On experience. Soon you will hear the friendly Sidewinder G₂ beeps telling you that your new firewall is up, running, and protecting your site.

Unlike other firewalls, no one has ever found or reported a flaw on Sidewinder G₂ technology that required an emergency security patch. Yes, it's true! Sidewinder G₂'s multi-layered defenses have stood the test of time and have proven since installation #1 in January of 1995 that the underlying SecureOS™ UNIX operating system can handle even the highest-grade attacks out of the box, whether they are known or unknown. ICSA and Common Criteria-certified, plus validation and selection by the world's most demanding security organizations, ensures your Sidewinder G₂ will never miss a beat, even as new and more sophisticated Internet attacks continue to evolve. Sidewinder G₂ lets you say "goodbye" to emergency security patches, resulting in a much lower total-cost-of-ownership (TCO) as compared to competitive products where you are regularly required to react and patch the firewall application and underlying operating system.

Compact, powerful, rack-mounted, and secure!

- Simple Power-It-On!™ deployment
- Full line of high-performance firewall appliances
- Hybrid firewall: stateful inspection to application-level filtering
- Decrease communication costs with a low-cost VPN
- Lower TCO—say "goodbye!" to emergency security patches: inoculate with patented SecureOS™ software
- Centralized security for multiple distributed Sidewinder G₂ firewalls
- Single point of contact, 24 x 7 "live answer" support

SECURE
COMPUTING



Full rack of the Sidewinder G2 Firewall model 2000 appliances

VPN compatibility

- IPSec and IKE protocol compliance verified through ICSA certification
- Extended IKE Authentication (XAUTH) Version 6.0
- X.509 version 3 certificates
- Simple Certificate Enrollment Protocol (SCEP)
- Support for Baltimore, Entrust, Verisign, Netscape, and Microsoft certificates
- Tunnel or transport mode security
DES, Triple-DES, MD5, SHA-1 algorithms, and CAST
- PKCS #7, #10, and #12
- FIPS PUB 46-1 and 46-3
- FIPS PUB 140-1
- FIPS PUB 180-1

Administration system requirements

- IBM-compatible computer with a 1 GHz Pentium processor or equivalent
- Windows NT Workstation 4.0 with 512 MB RAM;
- Windows 2000 and ME with 512 MB RAM
- 10 MB hard disk space
- Native Microsoft TCP/IP communications protocol
- Microsoft Internet Explorer 4 or later

Downtime is not tolerated, so when it comes time to upgrade your G₂ Firewall or add features, new software is delivered to you automatically via the Internet. Sidewinder G₂ authenticates, self-checks, and even self-installs upgrades for your system (operating system and all application software) with a single command per your schedule.

Scalable performance, reliability, and high availability to satisfy any requirement

Scalability and reliability start deep inside the Sidewinder G₂ Firewall. Secure Computing's SecureOS UNIX is the first and only firewall operating system to be optimized for Pentium® processors at the Intel® ASC performance testing labs. With gigabit throughput and 1,000,000+ concurrent connections on the high end model 4000 appliance, maximum performance with premium enterprise security is within every organization's reach. The G₂ Firewall includes premium stateful failover software and when used in conjunction with Secure Computing-certified load balancing solutions, the Sidewinder G₂ Firewall achieves unlimited scalability, and as much throughput as you could possibly need.

Unmatched hybrid security and Windows-based management

Sidewinder G₂'s hybrid security architecture combines the entire range of firewall mechanisms including basic packet filters, stateful inspection, circuit level proxies, application proxies, secured servers, real-time Strikeback intrusion detection alerts, and denial of service (DOS) protection in one simple, cost-effective package. While other simple stateful inspection firewalls cannot address the rigors of the modern, Web-based enterprise, Sidewinder G₂ combines stateful inspection with application-layer filtering to prevent even the most sophisticated types of attacks. As more enterprises and government agencies rely on Web services such as .NET, XML, and SOAP, application-layer filtering is becoming an essential part of the security environment.

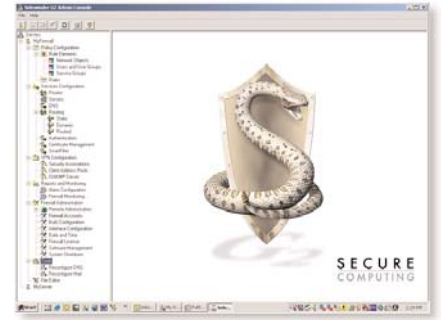
At its hardened core is our Intel-tuned SecureOS UNIX with patented Type Enforcement® technology. Using a strategy of isolation, Type Enforcement technology protects every byte of software in the firewall by making it impossible for an attacker to use one service to gain access to another, or infiltrate the system by gaining root access. It protects every file, every directory, and every executable against both known and unknown attacks. Intelligent application-level proxies and secured servers protect DNS, SMTP mail, FTP, HTTP and other high-use Internet services in ways that no "stateful-inspection-only" firewall could ever dream of delivering.

Ease-of-management

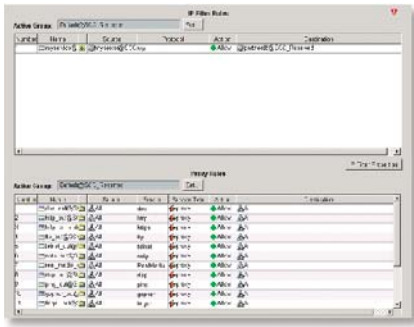
Sidewinder G₂'s Windows®-based administration console software uses an intuitive tree-based interface to manage one or more Sidewinder G₂ firewalls locally or around the world. The easy-to-use GUI-based management tools and access control logic give organizations the flexibility to deploy and enforce their most complex security policies. And administrators have pop-up access to context-sensitive Help menus every step of the way.

Enterprise management

The complementary Sidewinder® G₂ Enterprise Manager™ product is an *enterprise strong™* security appliance that delivers both single-point policy management and a central audit-log and configuration back-up repository for hundreds of distributed Sidewinder G₂ firewalls, all managed from a highly intuitive Windows®-based software package. Installation and start-up of the pre-imaged appliance, with its SecureOS UNIX and tightly integrated SQL database, is simple and fast as you experience the convenience of our Power-It-On promise. You only need a small number of skilled firewall experts across your entire organization to build, deploy, and lock down firewall policies—ensuring configuration integrity and saving administration time and costs.



Management tree: Color enhancement with intuitive tree-based structure make the firewall easy to use and manage.



Unified rules: Managing stateful inspection and application proxies is simple with unified rule views.



Model 25, 100



Model 250, 1000



Model 2000



Model 4000

Embedded VPN and authentication to leverage the low-cost public Internet

By providing secure, encrypted site-to-site and client-to-site communication over public networks such as the Internet, virtual private networks (VPNs) allow organizations to realize significant cost savings. Sidewinder G₂'s VPN gateway and SoftRemote VPN client functionality are time tested, mature, and ICSA IPsec-certified. G₂ Firewall delivers an enterprise-class VPN solution integrated with the firewall software. Sidewinder G₂ Firewall integrates with leading authentication methods including passwords, NT domain, LDAP, SafeWord® PremierAccess™, SecurID, and the RADIUS protocol, thereby ensuring user security in addition to providing support for digital certificates for VPNs.

The whole package counts—warranty, technical support, and customer training round out this enterprise security solution

The Sidewinder G₂ Firewall appliance offering provides an extra measure of assurance with its Dell hardware. Dell is world-famous for providing the highest quality products that incorporate leading technology at the most competitive prices. When you order an appliance for your Sidewinder G₂ Firewall, you reap the benefits of Dell's legendary reliability, backed up by a three-year hardware warranty service and enterprise firewall support, all handled through our award-winning SecureSupport® center.

Secure Computing's SecureSupport center provides "Live Answer" assistance 24 hours a day. Yes, at any time day or night you talk to people, not machines. Secure Computing offers a single point of contact for hardware warranty, operating system, and firewall/VPN administration questions. Secure Computing can also provide onsite support to address any special needs.

Numerous training options are available as well to help you get the most out of the world's strongest firewall. Secure Computing offers classroom training or, if travel is not desirable, you can simply log in to Secure Computing's unique e-training facility where administrator training is delivered right to your browser.

POWER-IT-ON!™

- The rack-dense Sidewinder G₂ Firewall appliance-based product arrives pre-loaded
- Sit at your desk with the Windows® configuration wizard and answer 15 simple questions, then save to floppy
- Insert the configuration diskette for the Power-It-On!™ experience
- Just a few minutes later, the G₂ Firewall appliance beeps 4 times to let you know it's up and protecting your network

It's that easy to deploy the world's strongest firewall and VPN

Sidewinder G₂ Firewall models and features

	25, 100	250, 1000	2000	4000
Firewall throughput	150+ Mbps	1.2 Gbps	1.4 Gbps	1.5 Gbps
Number of users/nodes	25 or 100	250 or unlimited	Unlimited	Unlimited
Maximum recommended users	25 or 100	250 or 5000 (model 1000)	30,000	50,000
Firewall concurrent connections	250,000	1,000,000+	1,000,000+	1,000,000+
VPN throughput	32 Mbps	32 Mbps	128 Mbps	128 Mbps
VPN concurrent connections	50	200	500	1000
Power-It-On!™ deployment	Yes	Yes	Yes	Yes
SecureOS®—protects against both known and unknown attacks	Yes	Yes	Yes	Yes
Hybrid filtering—stateful inspection and application/intrusion protection	Yes	Yes	Yes	Yes
VPN	Included	Included	Included	Included
Stateful failover (HA)	Included	Included	Included	Included
Content filtering • Java, ActiveX, and Antivirus	Yes	Yes	Yes	Yes
Secured Web caching (Squid)	Yes	Yes	Yes	Yes
On-Box™ SmartFilter® URL filtering	Option	Option	Option	Option
Secured DNS & mail server	Yes	Yes	Yes	Yes
Integrated Strikeback® intrusion detection & denial of service protection	Yes	Yes	Yes	Yes
Common Criteria certification	EAL4+	EAL4+	EAL4+	EAL4+
Three-year hardware warranty	Included	Included	Included	Included
24 x 7 “Live Answer” support	Standard option	Standard option	Standard option	Standard option
Physical rack size	1U	1U	2U	4U
Hardware specs (see www.sidewinder.com for additional hardware information)				
Processor(s)	1 standard 2nd optional	1 standard 2nd optional	2	4
Power supply	Single, Dual optional	Single, Dual optional	Dual	Dual
RAID optional	RAID 1 option	RAID 1 option	RAID 5 option	RAID 5 standard
Network Interfaces 10/100 and 10/100/1000 options available	3-10	3-10	3-10	3-10



Note: Performance statistics, hardware specs, and network interfaces are current as of May 14, 2003. For the latest information or additional details, please contact a Secure Computing sales representative or channel partner.

Secure Computing Corporation: www.securecomputing.com



Corporate Headquarters
4810 HARWOOD ROAD
SAN JOSE, CA 95124 USA

TEL +1.800.379.4944
TEL +1.408.979.6100
FAX +1.408.979.6501

European Headquarters
EAST WING, PIPER HOUSE
HATCH LANE
WINDSOR SL4 3QP UK

TEL +44.1753.410900
FAX +44.1753.410901

Asia/Pac Headquarters
801 YUE XIU BLDG.
NOS. 160-174 LOCKHART ROAD
WANCHAI HONG KONG

TEL +852.2520.2422
FAX +852.2587.1333

Japan Headquarters
LEVEL 15 JT BLDG.
2-2-1 TORANOMEN MINATO-KU
TOKYO 105-0001 JAPAN

TEL +81.3.5114.8224
FAX +81.3.5114.8226

© May 2003, Secure Computing Corporation. All Rights Reserved. Secure Computing, SafeWord, Sidewinder, SmartFilter, Type Enforcement, Softoken, SecureSupport, and Strikeback, are trademarks of Secure Computing Corporation, registered in the U.S. Patent and Trademark Office and in other countries. G₂ Firewall, Sidewinder G₂, G₂ Enterprise Manager, PremierAccess, SecureOS, MobilePass, On-Box, Power-It-On!, enterprise strong, Plug into a positive Web experience, and Protecting the world's most important networks are trademarks of Secure Computing Corporation.